

FIGURES 1-11

Figure	Page
1. General view of Huancayo Magnetic Observatory	9
2. Paccha Pampa, viewed from the northwest	9
3. Aerial view of buildings and grounds, Huancayo Magnetic Observatory	10
4. Drawing showing layout of earth-current lines and principal topographical features	11
5. Front view of Leeds and Northrup multipoint recorder	12
6. Detailed front view of panel board of Leeds and Northrup multipoint recorder	12
7. Wiring diagram of multipoint recorder	13
8. Detail of wiring diagram of multipoint recorder	14
9. Eleven-year means, diurnal variation curves, 1932-1942	15
10. Eleven-year means, seasonal variation curves, 1932-1942	16
11. Eleven-year means, variation with solar activity, hodograms, 1932-1942	17

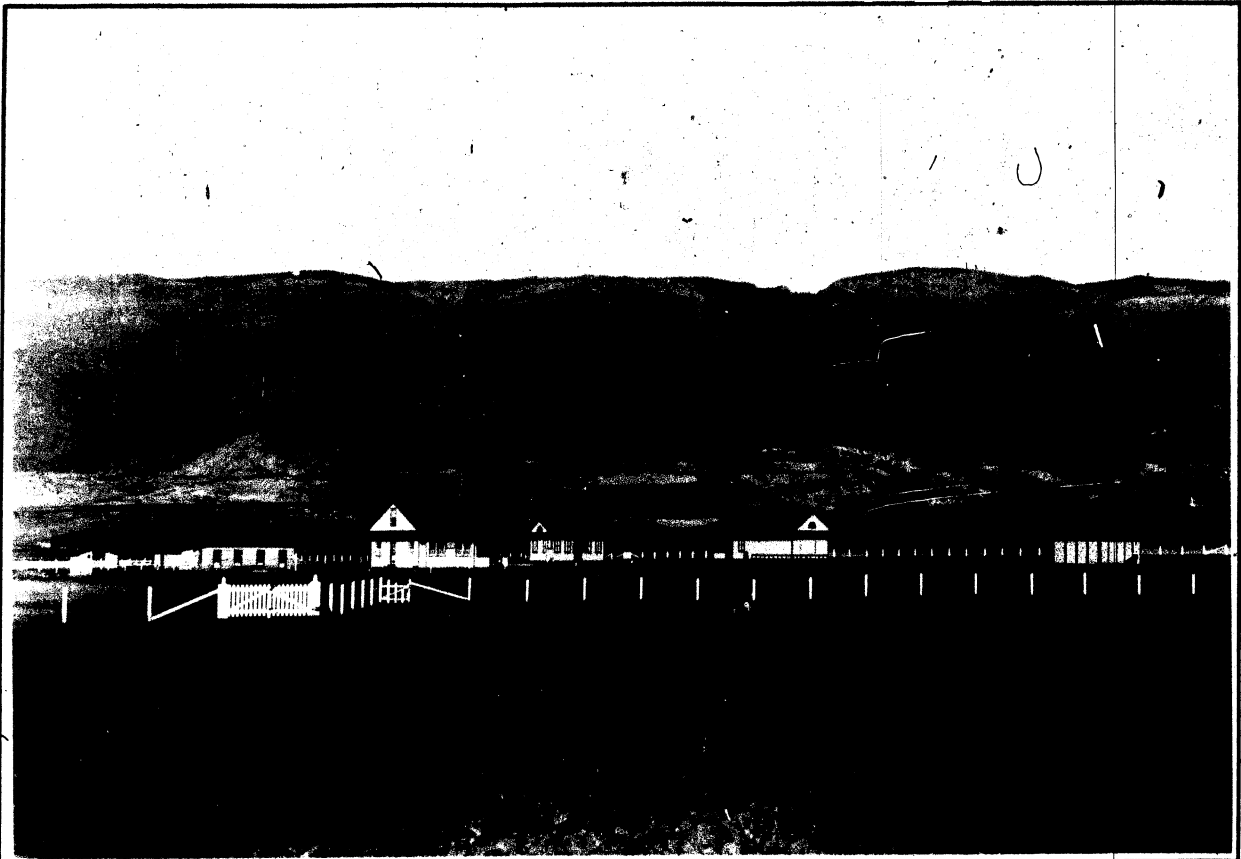


Fig. 1. General view of Huancayo Magnetic Observatory from the north, showing topography of site, June, 1923



Fig. 2. Paccha Pampa, viewed from the northwest, showing Huancayo Observatory, May, 1927

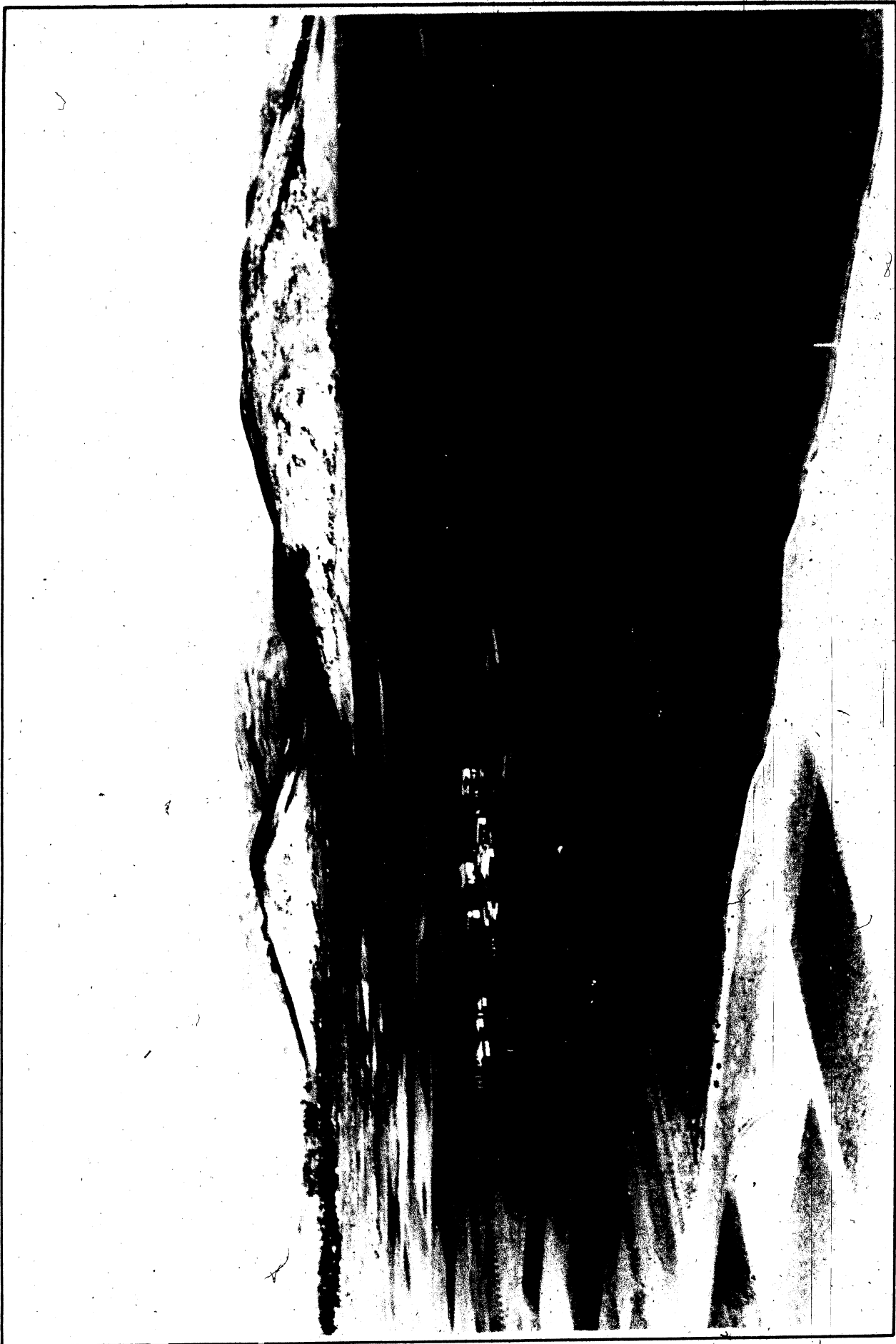


Fig. 3. Aerial view of buildings and grounds, from the southeast, Huancayo Magnetic Observatory

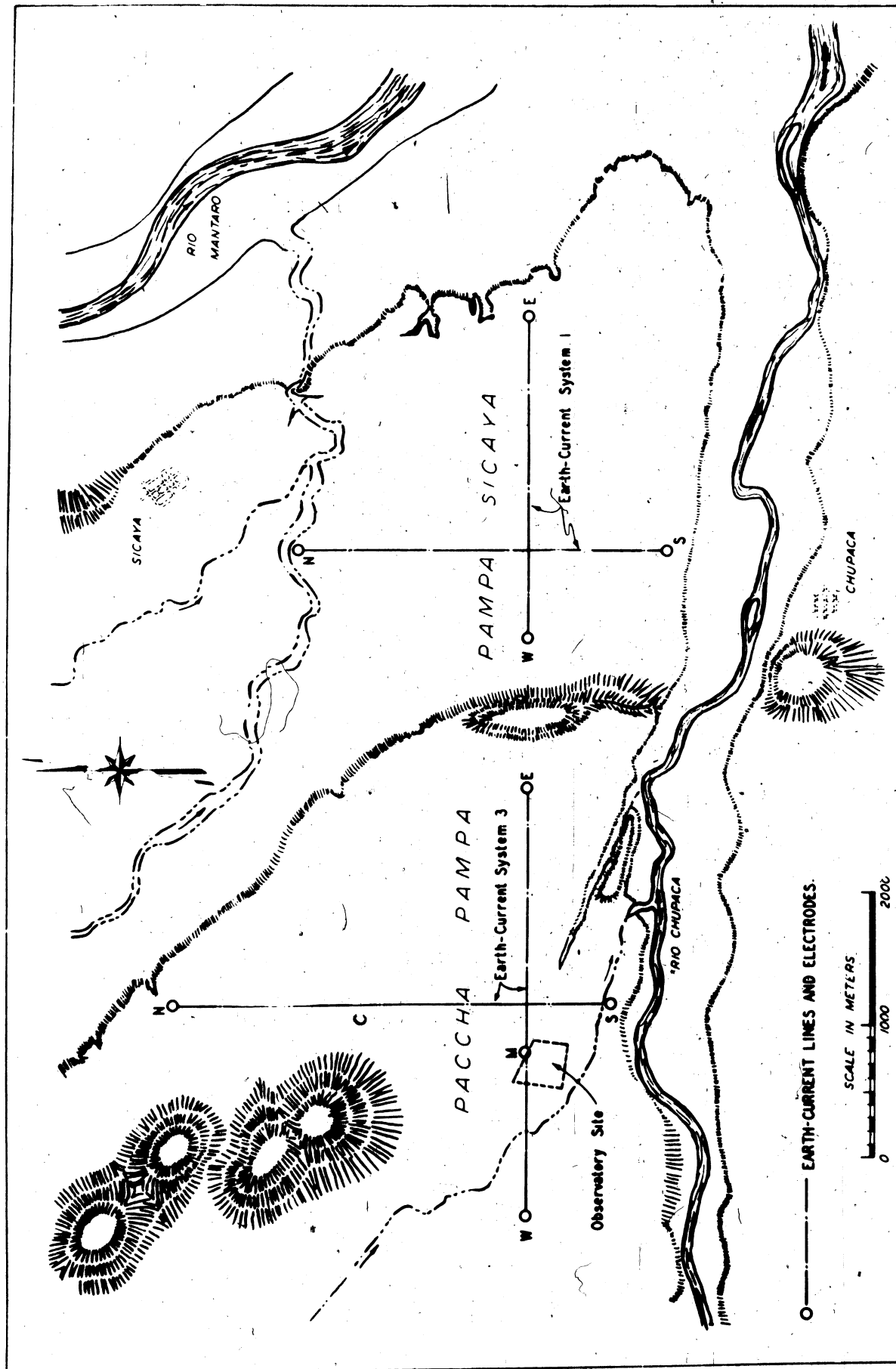


Fig. 4. Drawing showing layout of earth-current lines and principal topographical features of immediate vicinity of Huancayo Magnetic Observatory

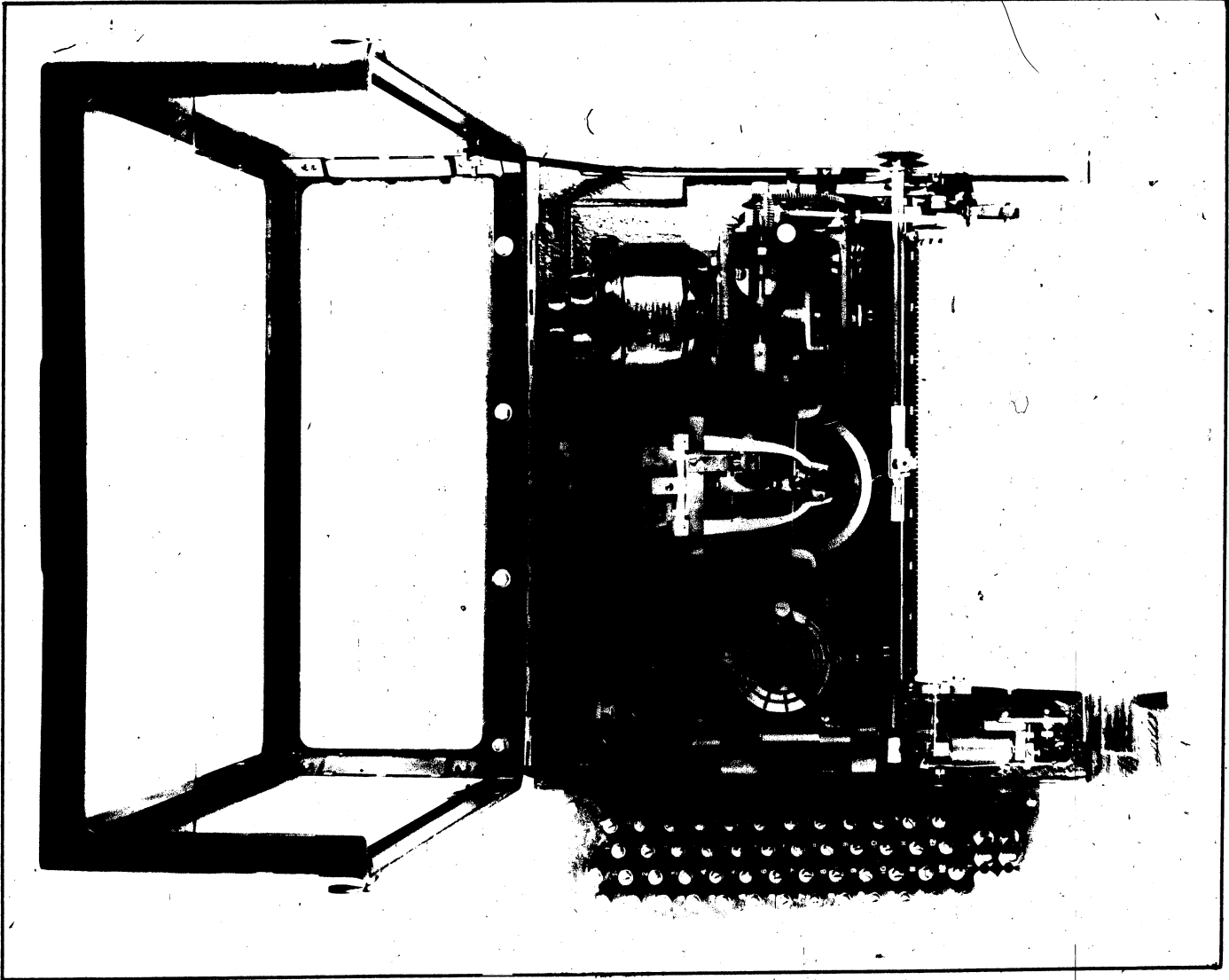


Fig. 5. Front view of Leeds and Northrup multipoint recorder, No. 95801

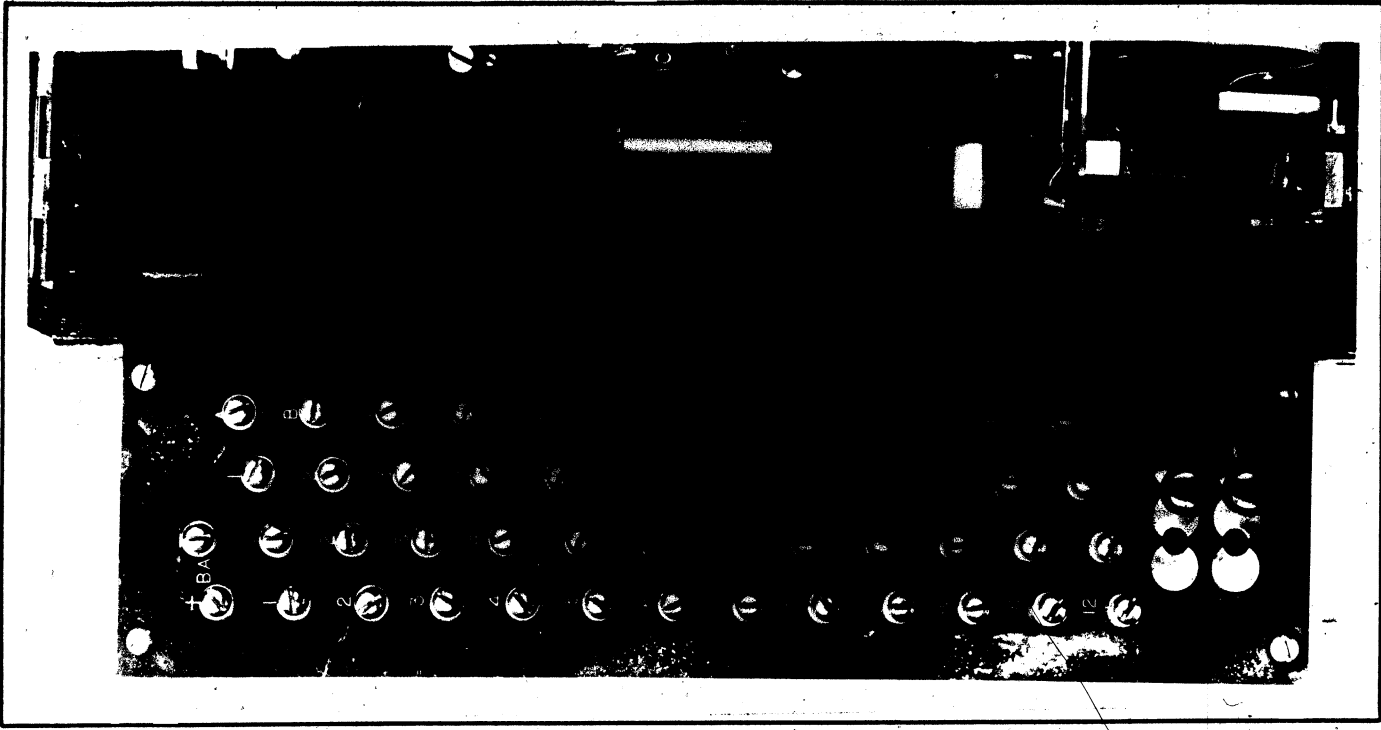


Fig. 6. Detailed front view of panel board of Leeds and Northrup multipoint recorder, No. 95801

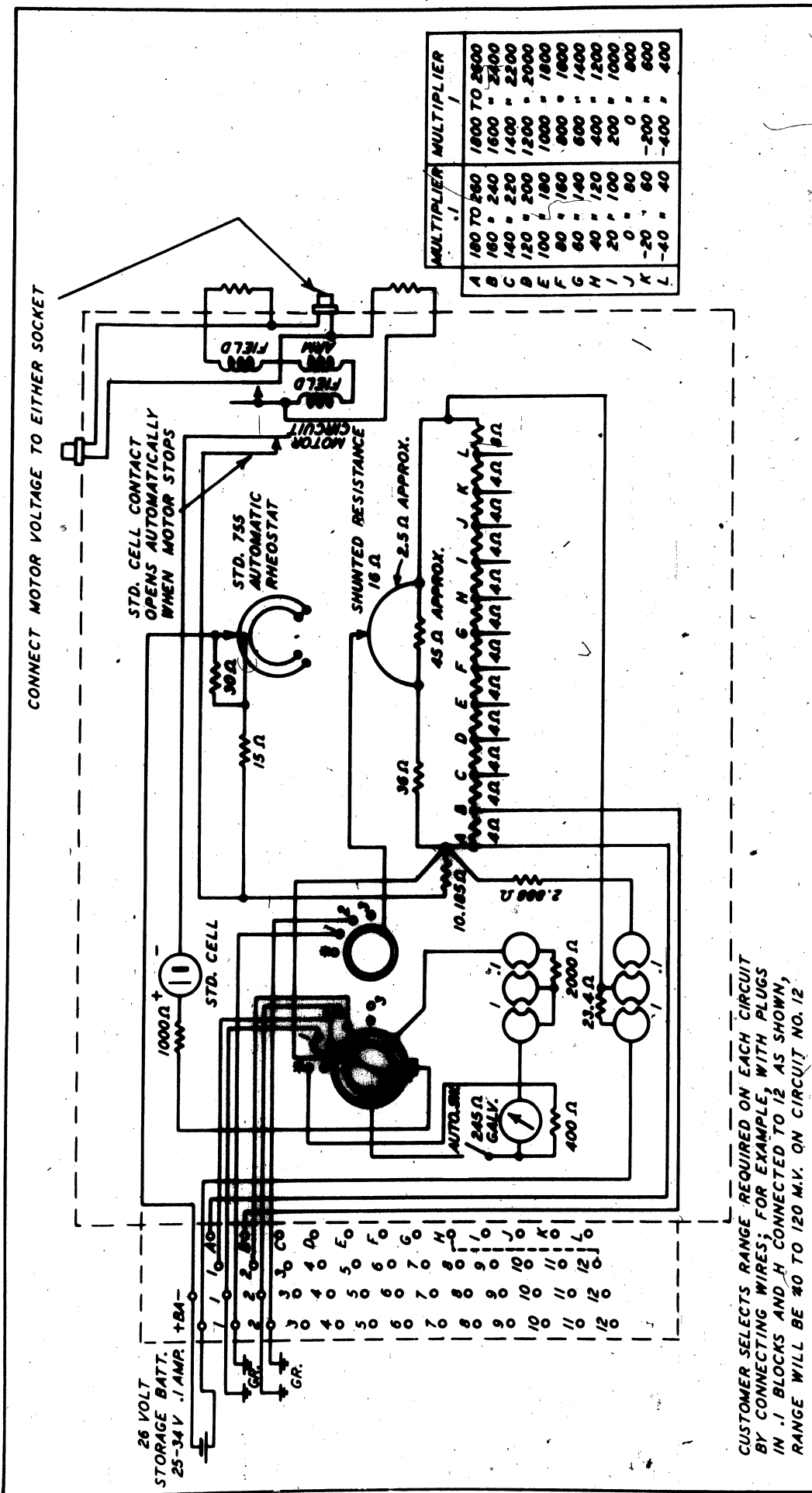


Fig. 7. Wiring diagram of multipoint recorder, showing provisions to obtain a variety of ranges

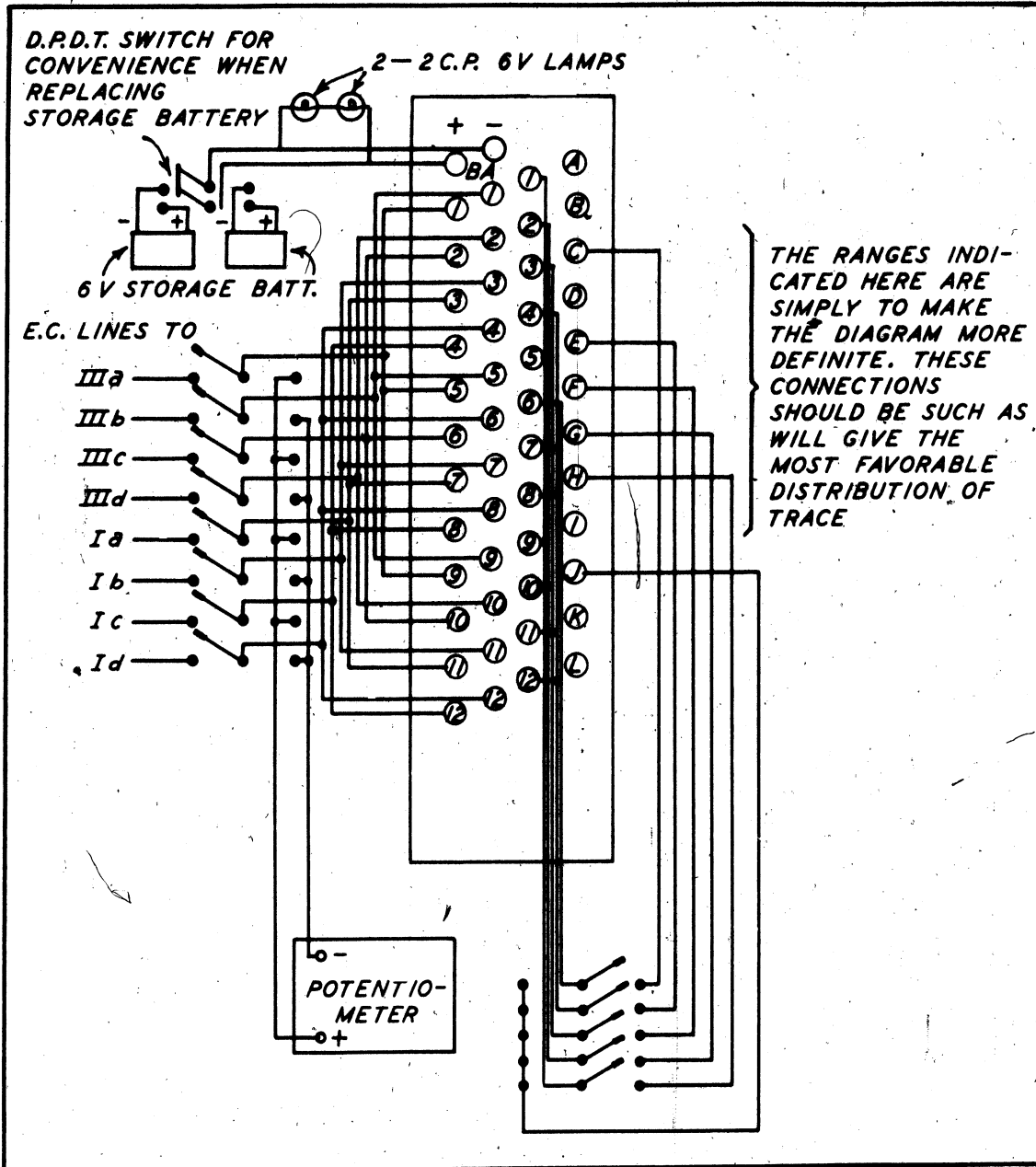


Fig. 8. Detail of wiring diagram of multipoint recorder

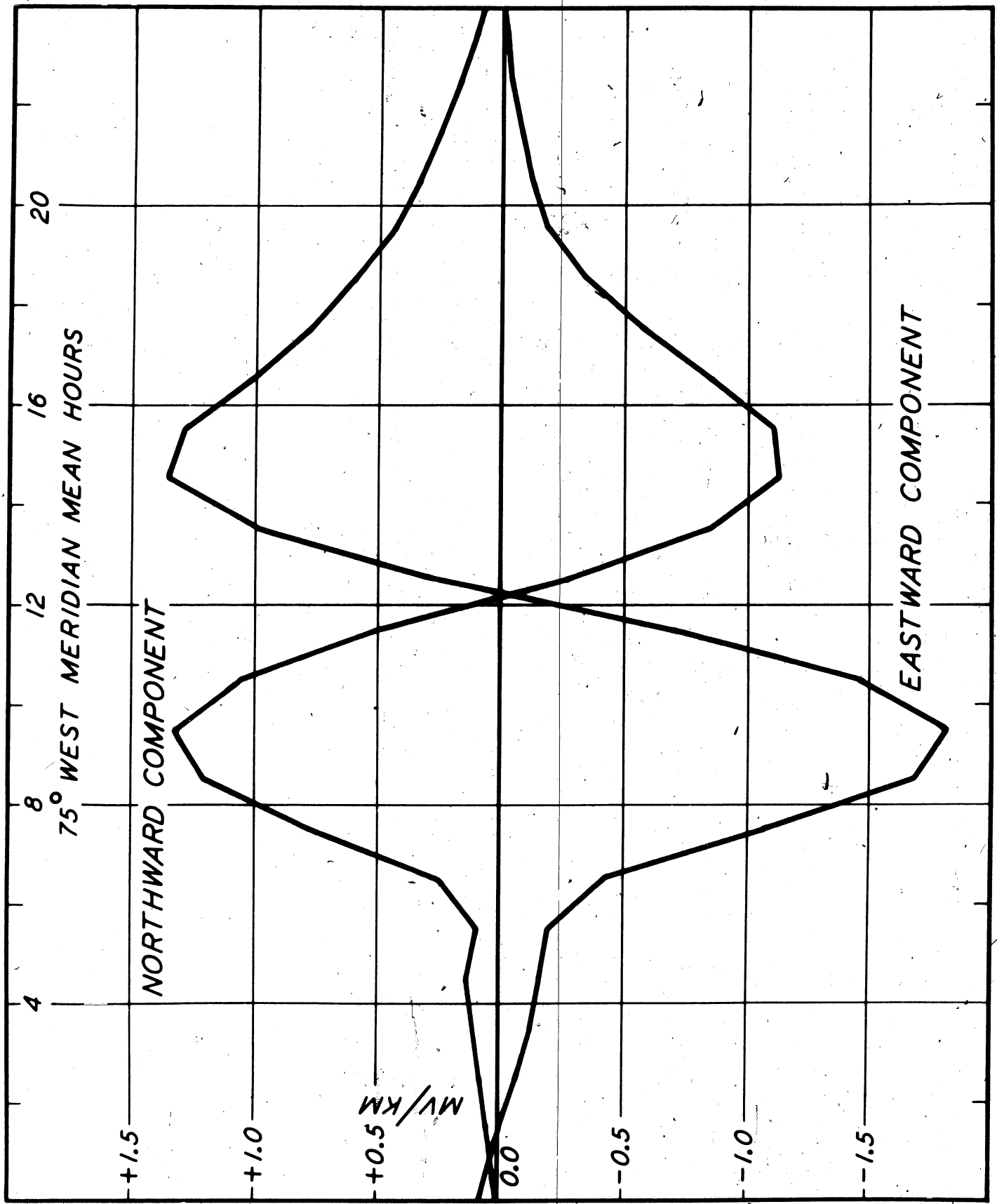


Fig. 9. Eleven-year means, diurnal variation curves, Huancayo Magnetic Observatory, 1932-1942

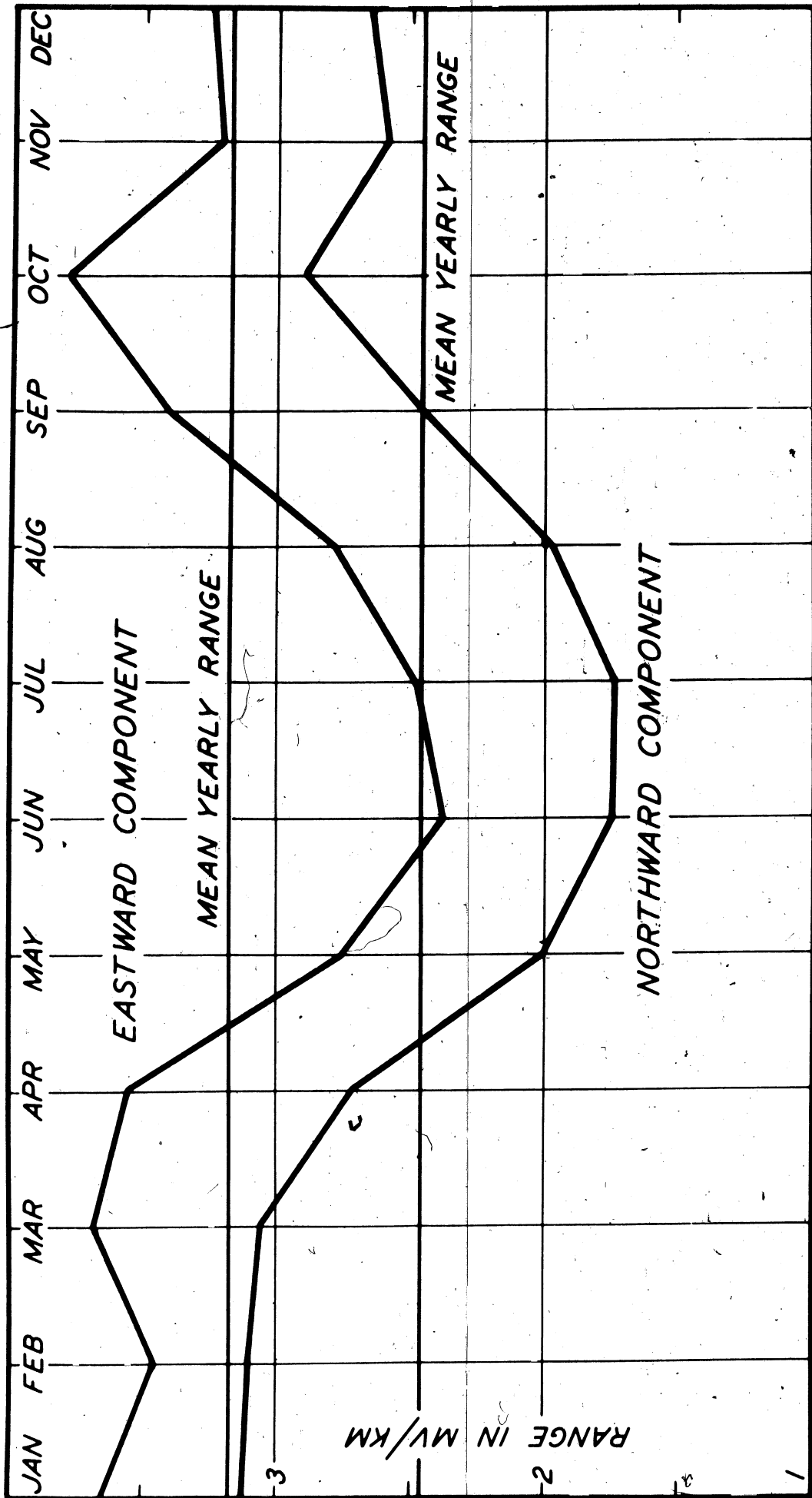


Fig. 10. Eleven-year means, seasonal variation curves, Huancayo Magnetic Observatory, 1932-1942

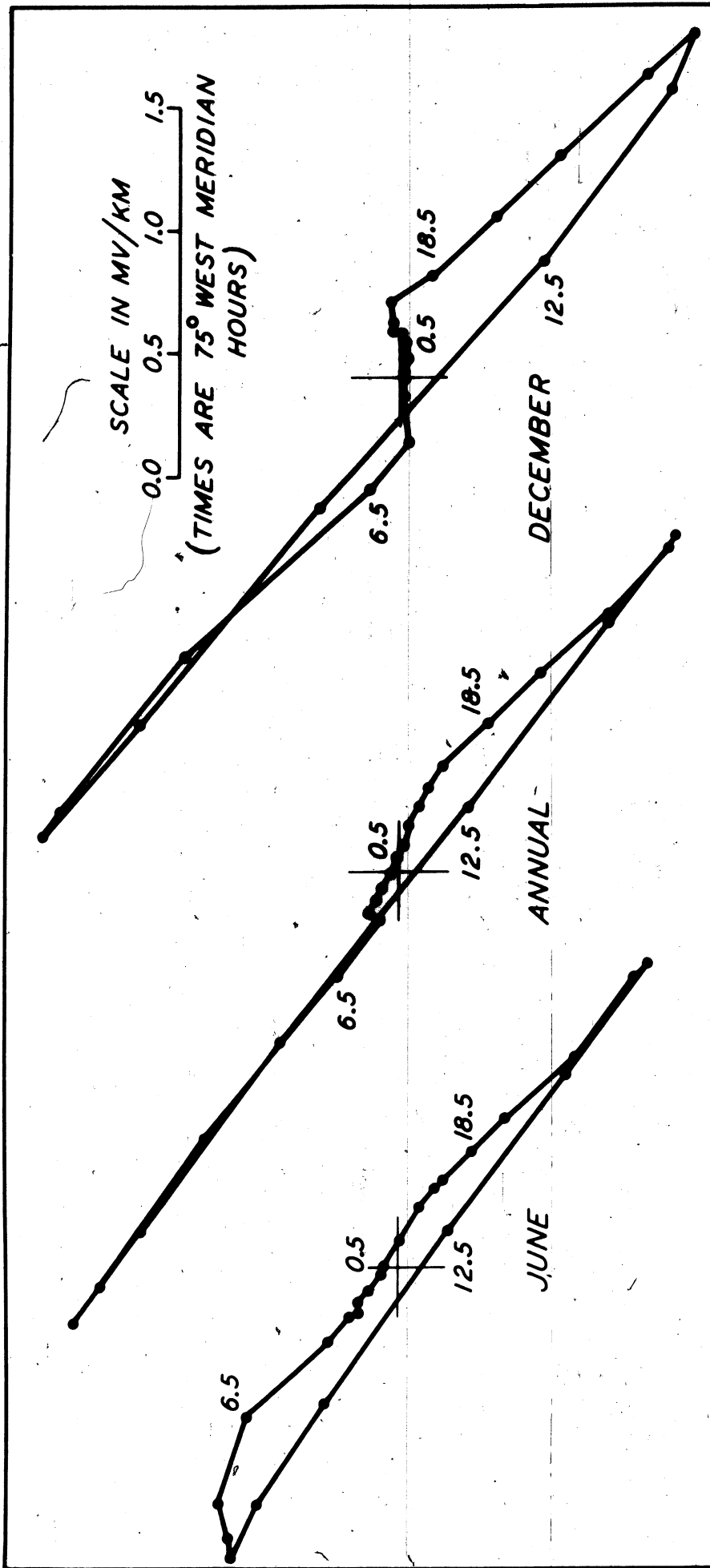


Fig. 11. Eleven-year means, variation with solar activity, hodograms, Huancayo Magnetic Observatory, 1932-1942